

INK CARTRIDGE ERROR: REPLACE INK CARTRIDGE

Error Message: **INK CARTRIDGE ERROR: REPLACE INK CARTRIDGE**

Explanation of Error:

The **CSIC Chip** reports ink in the **Cartridge**, but the **Ink Out Sensor** (located where the ink leaves the **Cartridge**) reports no ink.

Cause of Error:

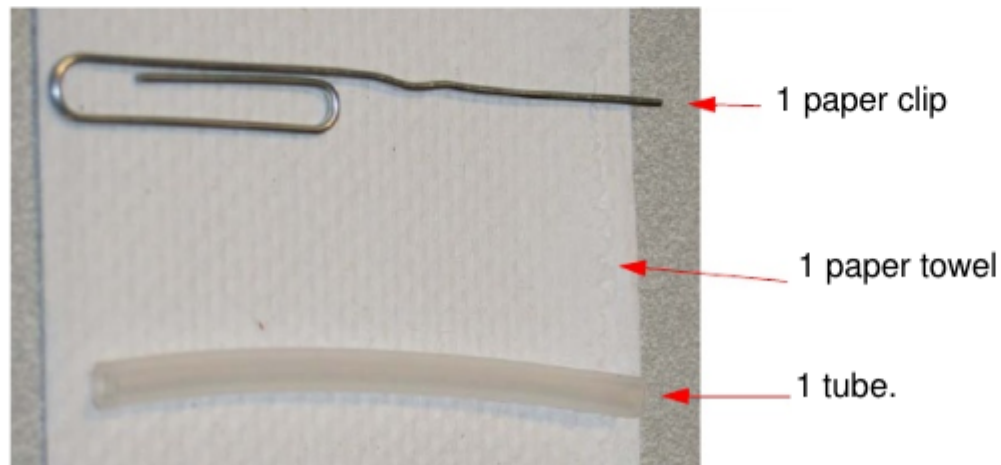
Tiny air bubbles in the **Ink Out Sensor**.

Repair Strategy:

Remove the tiny air bubbles from the **Ink Out Sensor**.

Repair Detail:

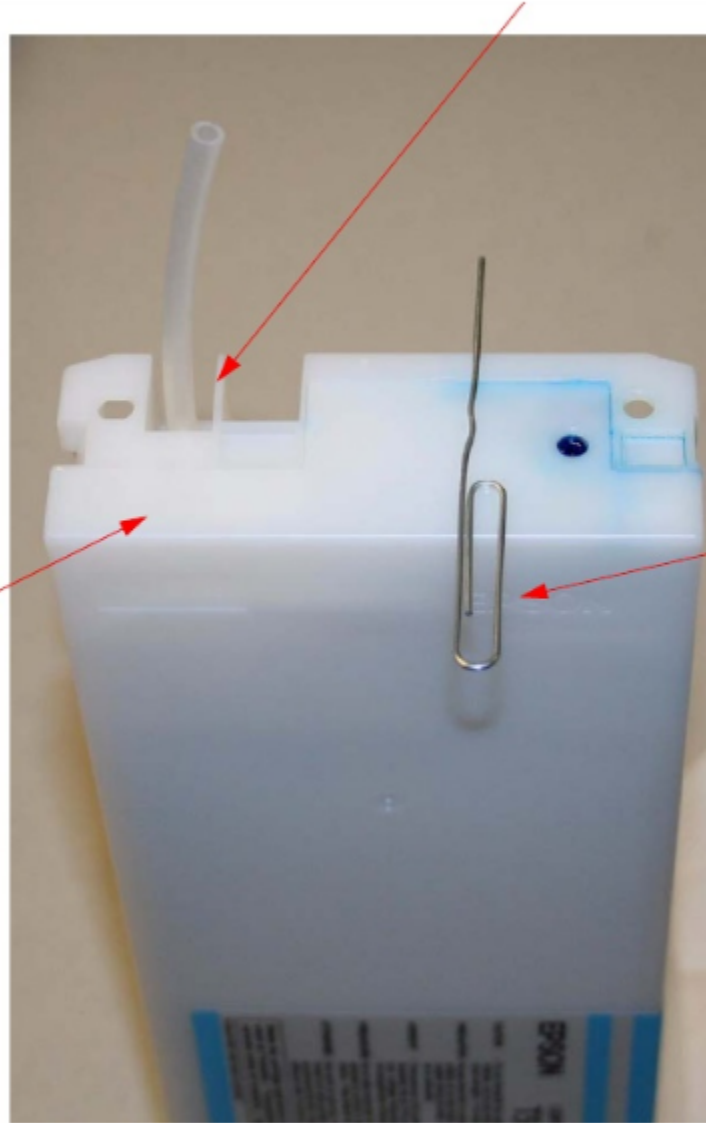
1. Assemble tools.



2. Prepare to inflate the **Ink Cartridge**.

Attach the hollow tube to the **Air Pressure Insert Nipple**.

Place the **Ink Cartridge** on a flat surface, with this side up.

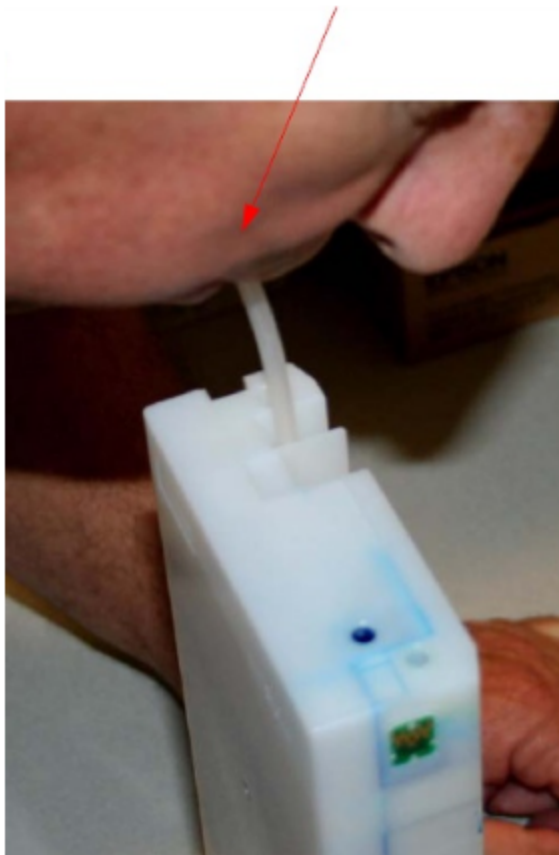


Ensure that the paper clip is handy.

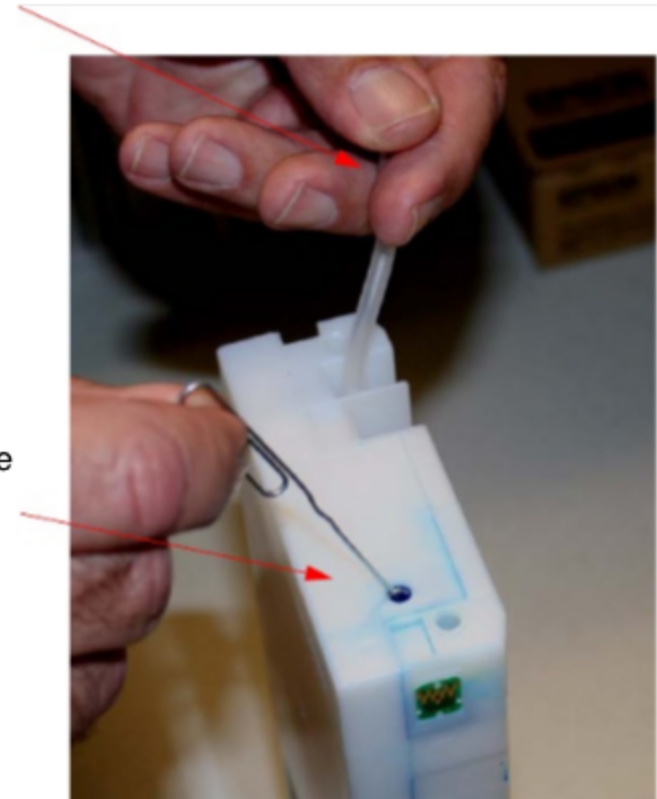
3. Inflate the **Cartridge** and bleed it.

Note: *The ink is in a bag, inside of the sealed Ink Cartridge. When the Cartridge is inflated, the air pressure squeezes the bag of ink, placing the ink under pressure.*

1. Inflate the inside of the **Cartridge**.

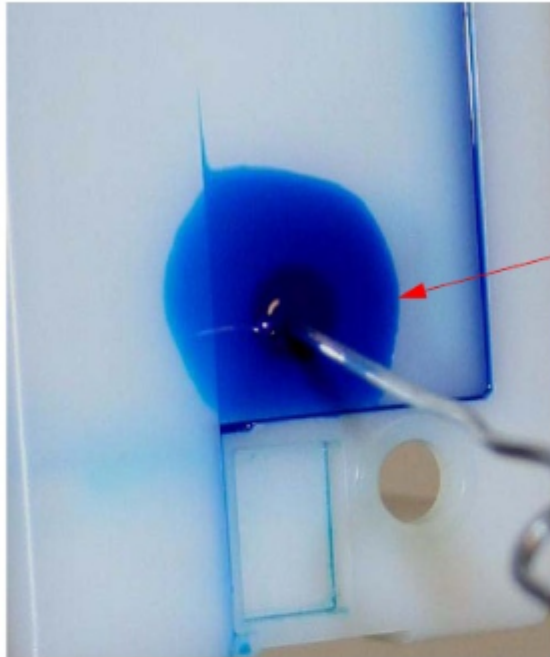


2. Seal the tube trapping the pressure in the **Cartridge**.



3. Use the paper clip to open the **Ink Valve**, and release a small amount of ink and the trapped air. (See next page)

4. Inspect the released ink.



This image shows the approximate amount of ink that should be released from the **Cartridge**. This particular **Cartridge** did not contain air bubbles in the **ink**.

This **Cartridge** did contain air bubbles in the ink. The small amount of air in the ink is enough to cause the error.

